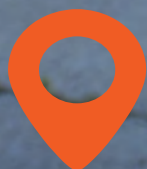


FleetLogix



FLEET MANAGEMENT AND
TRACKING SOLUTIONS





Keeping Australia on
track for over 18 years



This brochure gives an overview of all *Fleetlogix* Fleet Management and Tracking solutions, and also provides more information on the real-time visibility software that works with *Fleetlogix* products to offer complete fleet solutions.

INDEX

OUR SOLUTIONS OVERVIEW	01
PRODUCTS	02
PRODUCT COMPARISON	03
PRODUCT FEATURES DEFINED	04
FLEET MANAGEMENT PERIPHERALS	04
REAL-TIME VISIBILITY SOFTWARE	05
SOFTWARE COMPARISON	07
SOFTWARE FEATURES DEFINED	08

FLEET MANAGEMENT AND TRACKING SOLUTIONS

A complete overview of our fleet offerings.

Containers, Fixed Plant, Refrigeration



Private vehicles, small to medium fleets



Boats, Planes and Aircrafts, Taxis and Busses, Trains



Armed Reaction, Security Guards, Patrollers, Merchandise and Sales Industries, Technicians, Out of Office/Lone Workers



Car Rental, FML, Government, Insurance, Local Authorities and Municipalities, Long Haul, OEM and Dealers, Police and Security, Professional Services, Service, Utilities



Agriculture, Construction, Fork Lifts, Fuel and Chemical, Mining, Tipplers, Yellow Equipment



Our **Fleet Management** and **Tracking** packages have been designed for a variety of fleet sizes offering differing levels of functionality and protection. Utilising GPS satellite positioning and GSM cellular communication, **Fleetlogix** offers advanced telematic information and fleet management services. Our products address the challenges associated with optimising the reliability and efficiency of the modern fleet, and are based on more than 25 years of global fleet management expertise.

Our Fleet Management systems provide real-time information easily accessed through mobile, tablet and desktop devices to measure and realise a multitude of business benefits that regularly include:

- Operational control and management features that deliver cost savings, create efficiencies and contribute to increases in customer service.
- Safety and security devices for legislative compliance and the protection of employees and assets.
- Productivity measures that will contribute towards profitability.

- Driver behaviour monitoring that promotes effective driving styles to reduce fuel consumption and overall vehicle maintenance and service costs.
- Green reporting on environmental factors such as carbon emissions and fuel reduction.

Our systems are built with intelligent sensors including a highly sensitive 50-channel GPS and a powerful accelerometer to provide valuable driving intelligence, including harsh acceleration, harsh braking, harsh cornering, over-speeding, harsh bumps and excessive idling. Vehicle and fleet information is then accessed through our real-time visibility software applications **Fleetlogix** Mobi, **Fleetlogix** Online and **Fleetlogix** MaXx.

In addition to our comprehensive range of Fleet Management systems profiled in this brochure we have developed a number of industry specific solutions. These tend to be more specialised solutions e.g. in high value asset transport applications and programmable logic controllers for monitoring health and safety of equipment and personnel across these industries.

TRACK YOUR ASSETS
WITH CONFIDENCE

CRANES

DELIVERY VAN

CONTAINER

PERSONAL CARS

HEAVY HAULAGE

RENTAL CARS

SOME OF OUR AVAILABLE DEVICES



PnP



T-50



T-100



T-400



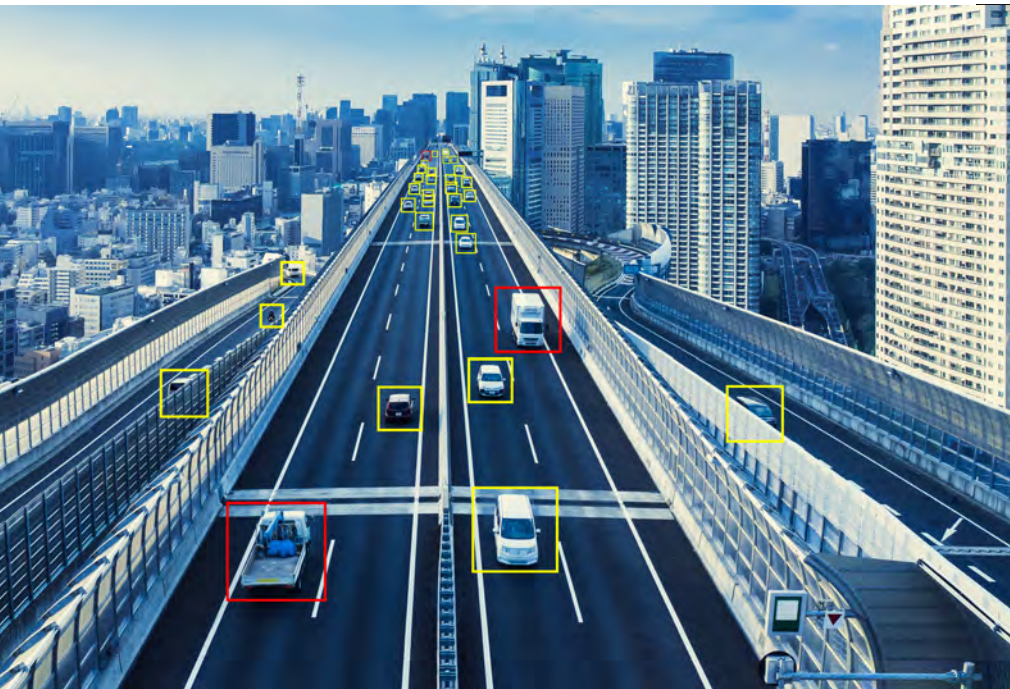
OYSTER



IRIS DASHCAM



GN700 DASHCAM



PRODUCTS

Plug & Play

The **P&P** is ideal for a range of applications where a hardwired tracking solution may not be suitable or, due to the frequency of installation / de-installation would be both time and cost prohibitive. The unit offers a complete end to end solution for basic track and trace telematics without installation, connecting quickly and easily to the OBD II diagnostic port of the vehicle to capture telematics data. Capabilities include driver behaviour reporting, odometer and accident recording.

T-50

The **T-50** is a proactive vehicle tracking system for small business owners who simply want the visibility of their vehicles and assets. The unit features an automatically updated business/private logbook, real-time vehicle location, trip replay, area alerts and an optional remote panic button. This will not only provide a simple way of monitoring assets and protecting against misuse, but also enable companies to ensure they are being driven responsibly to help maximise return on investment value.

T-100

The **T-100** is the vehicle tracking and management system used for light commercial, sales, FML, car rental and security vehicles. A specific feature is the driver ID, which enables the **T-100** to provide individual driver activity and behaviour. An optional in-cab driver behaviour indicator (DBI) provides real-time driver interaction to proactively improve safer and more efficient driving. The **T-100** enables better operational efficiencies and a reduction in vehicle life cycle costs by utilising additional inputs and outputs for 3rd party applications.



T-400

The **T-400** is a full featured, scalable, remotely upgradeable mobile solution developed for the tracking and management of professional hauliers, logistics and supply chain management, mobile workforce management, mining, public transport and emergency services.

In addition to recording vehicle status, location and trip information, the **T-400**, also proactively assists the driver to remain within the set parameters for safe and economical vehicle use. This is achieved by an audible pre-warning and continuous violation alarm. These exceptions are also reported to *Fleetlogix's* software users and recorded for further analysis in the *Fleetlogix* management software.

The **T-400** features several digital inputs and outputs, which may be used to monitor and control peripheral auxiliaries such as PTO, driver and or passenger door opening, seat belt engagements, sirens and actuators. Peripheral 3rd party devices such as barcode scanners, satellite navigation units, fuel level indicators, temperature loggers, onboard weighing systems and fare collection solutions can be integrated to add further value to this fleet management system. When integrated to a driver terminal device a comprehensive task management system is enabled, which includes two way communication, navigation and driver identification. Task or job instructions such as job number, description, job location, job to be completed and action required are received from the *Fleetlogix* software. A wide range of reports, including Tacho Analysis, Daily Usage, Graphic Usage, Movement, Fleet Emission, Driver Licence, Vehicle Maintenance, Fuel Summary and GYR Driver Rating are generated using the server based *Fleetlogix* MaXx software.

Fleetlogix Wireless

Fleetlogix Wireless is a 4G capable GPS battery-powered tracking system that requires no installation effort and reports activity for up to 7 years without the need for an external power source.

This re-deployable tracking system is available in rechargeable and non-rechargeable versions that are quick to deploy – making it ideal for tracking mobile resources such as vehicles, containers, palletised loads and other valuable cargo.



• Standard ○ Optional + Configurable

PRODUCT COMPARISON

GENERAL

	Wireless	PnP	T50	T100	T400
Stolen Vehicle Support	•	•	•	•	•
Vehicle Location (Polling)	+	•	•	•	•
Full Track and Trace	+	•	•	•	○
Satellite Fallback					○
Daily Health Check	•	•	•	•	•
Over the Air (OTA) Diagnostics	•	•	•	•	•

SAFETY AND SECURITY

Panic Alarm	○		•	•	•
Remote Panic Alarm	○	○	○	○	○
System Tamper Alarms			•	•	•
Remote Immobiliser	○	○	○	○	○
Tamper Immobiliser			○	○	○
Power Alarms	•	•	•	•	•
Unauthorised Movement	•	•	•	•	•
Driver ID Immobilization	+	+	+	○	○
Crash and Rollover Detection			•	•	•
Crash and Incident Reporting			•	•	•
GPS Tamper			•	•	•

DRIVER BEHAVIOUR

ABC'S		•		•	•
Driver Behaviour Indicator (DBI)				○	○
Tacho (RPM and Green Band)		•			•

OPERATIONAL CONTROL AND PRODUCTIVITY

Trip Start Detection	+	•	•	•	•
Area Management	•	•	•	•	•
Route Monitoring		•		•	
Management Reports	•	•	•	•	•
Business/Private		•	•	•	•
Driver ID Key				○	○

DIRECT INPUTS, OUTPUTS AND SENSORS

Accelerometer (3 axis)		•		•	•
CANBUS (J1939)					•
Frequency Input			•	•	•
Input Voltage (8v-32v)		•	•	•	•
Generic Input				•	•
Generic Output					•

SOFTWARE SOLUTIONS

Mobi	•	•	•	•	•
Online	•	•	•	•	•
MaXx	•	•	•	•	•

PRODUCT FEATURES DEFINED

General

A summary of all trips undertaken by a vehicle or driver within a given time frame. Find out at a glance where and when your vehicles were driving and the distance traveled as well monitoring driver behaviour for speeding, over revving, or idling for excessive periods of time.

Safety and Security

- **Panic Alarm**
An SOS emergency alarm that can be activated via remote or wired button.
- **E-Panic Alarm**
An SOS emergency alarm that can be activated via mobile phone.
- **System Tamper Alarms**
Alerts you when GSM jamming, box tampering or GPS interference is detected.
- **Remote Immobiliser**
Allows you to remotely shut down a vehicle, when needed.
- **Tamper Immobiliser**
Automatically shuts down a vehicle when specific tampering is detected. (User defined).
- **Power Alarms**
Alerts you when power is disconnected, or when either the internal or vehicle battery level is low.
- **Unauthorised Movement**
Notifies you when a vehicle moves while the ignition is switched off – such as when it's being towed.
- **Driver ID Immobilizer**
Vehicle will fail to start until the correct driver ID tag is scanned.
- **Crash and Rollover Detection**
Specific safety sensors will alert in the case of vehicle crashes and rollovers.
- **Crash and Incident Reporting**
Downloadable crash and incident data from *Ctrack MaXx*.
- **GPS Tamper Alarm**
Notifies you when physical damage occurs to the GPS antenna or GPS antenna input.

Driver Behaviour

- **ABC'S**
Allows you to monitor acceleration, braking, cornering, over-speeding as well as harsh bumps and excessive idling.
- **Driver Behaviour Indicator (DBI)**
This in-cab device gives real-time driver behaviour feedback, encouraging drivers to improve their driving style on the go.
- **Tacho (RPM and Green Band)**
Provides valuable tachograph data, including: RPM, green band driving, speed, idling and more.
- **On the Road**
The complete onboard system that saves time and money through navigation, optimal routing and better driver behaviour.

Operational Control and Productivity

- **Trip Start Detection**
Records vehicle movement or ignition-on input to determine when a trip starts.
- **Area Management**
Allows you to configure preferred areas, no-go areas and waypoints for geo-fencing.
- **Route Monitoring**
Static and timed route management.
- **Reports**
Backend and web based reporting on multiple fleet aspects.
- **Business/Private**
Records business/private trips with optional remote switch (privacy mode available).
- **Driver Identification**
Dallas ID key or cCom pin (cCom device required) to allow individual driver recognition which enables monitoring of driver performance and productivity.

Software Solutions

- **Mobi***
A mobile application that provides instant access to our vehicle tracking technology from a smartphone or tablet.
- **Online***
Zero footprint web application for internet tracking.
- **MaXx***
Server based software solution ideal for large to enterprise sized fleets.

*See the Real-time Visibility Software section for more information.



Vehicle Camera Systems

Why do I need a dash-cam?

- Dash cams provide video footage that can be invaluable to drivers and fleet operators in establishing fault after traffic incidents, preventing fraudulent insurance claims and as a record of events in the event of damage to the vehicle.
- False or misleading insurance claims arising from traffic incidents can be extremely costly and a well-placed dash-cam can provide an indisputable record of events that can be used to prove your version of events. Footage given to your insurance company or to the police can help speedily resolve disputes, saving you dollars and stress.

Enjoy the perks of protection:

- Full HD recording on up to 8 cameras (model dependent).
- Second by Second Location, G-force and Speed recording.
- Detailed but easy to read and interpret viewer software.
- The oldest data is overwritten when the SD card or hard disk runs out of storage space. There is no need to manually delete footage.
- The system has a separate "Event Buffer" which stores events (Speeding, Cornering, G-force, Duress Button) in a section that can only be overwritten manually (optionally configurable).
- There is no monthly running cost with the stand-alone system.

REAL-TIME VISIBILITY SOFTWARE

The software tools that keep fleet operations and vehicles, always visible.

The power of Fleetlogix's telematic information is realised through our easy-to-use suite of software solutions that add value to your business. The software solutions provide real-time access to your fleet through either a computer or mobile device, and includes valuable management information to increase overall productivity and effectiveness.

So, if you want a comprehensive solution that keeps your fleet always visible, then the flexibility of *Ctrack's* software solutions is what you have been looking for.

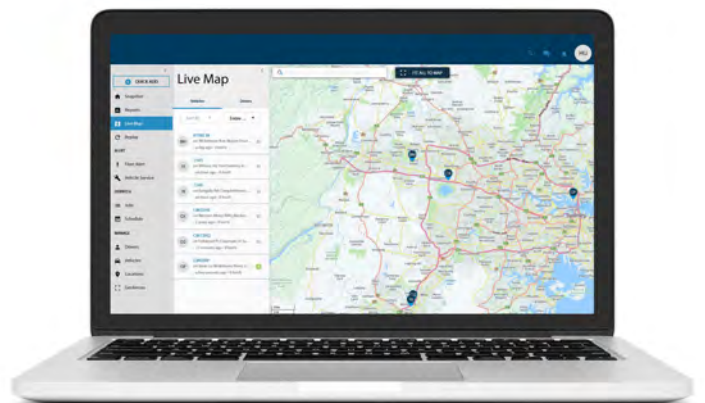
Mobi

Streamlined for efficiency and accessibility, Mobi is your handy tracking solution on-the-go. Accessible from a smart phone or tablet, users can easily navigate through the mobile dashboard, optimized for tracking and convenience.



Online

A complete suite of tracking and reporting services, accessible anywhere. Our self-service portal offers easy access to real-time GPS tracking 24/7, 365 days a year. View your vehicles' current locations at a glance or run a variety of reports over historical periods. Perfect for small to medium sized enterprises looking for an effective and simple solution to manage their fleet.



Using mapping such as Google, Nokia, Tele Atlas and Digital Globe, Fleetlogix Online enables a variety of viewing options to monitor multiple and individual vehicles in normal, terrain and satellite views (with labels) as well as access to live traffic flow information and journey directions.

No-go, preferred and waypoint geo-zones may be created to trigger email and SMS alerts regarding unauthorised vehicle movements into or out of predefined areas.

Making use of *Fleetlogix* Online, dispatch and schedule tasks may be effectively allocated to drivers by identifying the nearest vehicles to a job and selecting the appropriate employee based on required skill set. And via quick route calculations, distance and expected travel time can be displayed. Trip replays analysed with comparison overlaying map feature that monitors vehicle journeys on the map to identify job allocation issues and areas of improvement to increase jobs per week and maintain customer service.

MaXx

The MaXx fleet management software is one of the most sophisticated business analysis packages available in the marketplace. The in-depth reporting suite identifies areas of improvement that can save both time and money, as well as boost business and operational performance. Gain valuable insight into the needs and challenges of your business by understanding all aspects of fleet, driver and vehicle activity.



Fleet and Workflow Management

- Identify nearest vehicles to a job based on status, skill set or available time and dispatch appropriate employee using an cCom in-vehicle console.
- Integrate *Fleetlogix* MaXx with existing planning and scheduling tool to automate job allocation processes.
- Implement passive and proactive area management with the creation of geo-zones and points of interest to personalise the tracking tool and receive status alerts regarding key vehicle movements.

Advanced Vehicle Tracking

- Achieve added visibility and control by knowing the exact location and status of employees and vehicles in real time.
- Gain real advantage by driving down fleet running costs, boosting resource productivity and improving customer service.
- Enhance fleet performance by reducing fuel consumption, validating overtime claims, eliminating unauthorised vehicle use, achieving more per day, supporting environmental compliance, and increasing security.



Business Analysis

- Generate, schedule and issue many different management reports, with a range of flexible delivery options and easy to understand graph and table formats.
- Effectively analyse operational data, so critical business intelligence can be quickly shared across an organisation.
- Access a top level overview of key performance areas using an intelligent dashboard application that drills down to whatever level of detail is required to easily identify areas of under performance.
- Replay journeys for analysis of specific vehicle movements including route, 'green band' driving, RPM and speed in grid and map format.

Business Centre and Cost Centre Support Configurability

- Use Business Groups and Costs Centres to partition employees, vehicles and system users to mirror the hierarchical and operational structure of the organisation.
- A server-based system for organisations that want to manage operational real-time data locally for easy interfacing to 3rd party teams and bespoke reporting.
- Remotely access the in-vehicle unit to configure settings without the need for a physical diagnostic test.

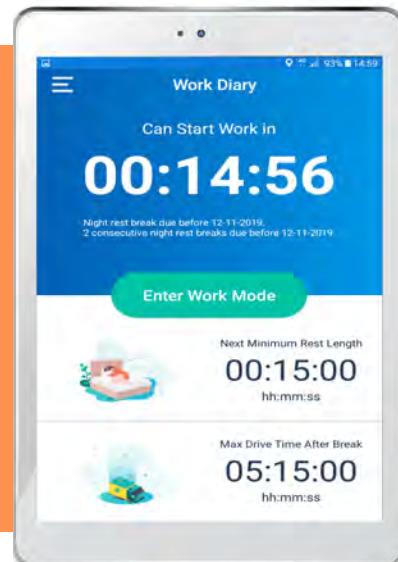
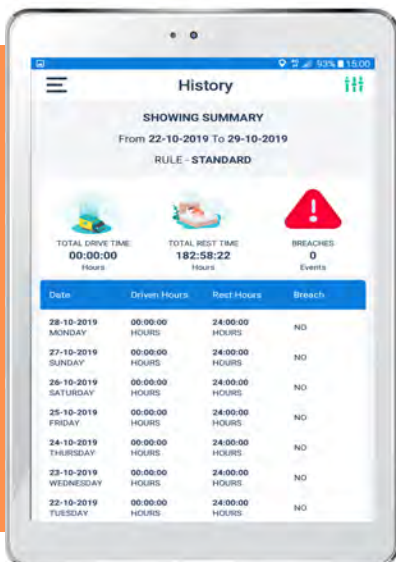




Driver Mate EWD Display

Driver Mate Truck & Bus Driver Display

- For many companies, compliance with Australian Heavy Vehicle National Law fatigue requirements is an incredibly difficult and time-consuming task. Fleet managers are required to ensure compliance by monitoring and responding proactively to issues in fleets that can be hundreds, or even thousands, of drivers in size. Drivers are required to keep within complex and overlapping strictly prescribed work and rest time limits.
- The Driver Mate Electronic Work Diary system makes management of work and rest times a breeze for drivers with a simple real-time visual platform that is easy to use and understand. Scheduled reports and automatic alerts for non-conforming drivers means management can easily assess whether drivers are compliant with relevant fatigue and safety requirements and meet their Chain of Responsibility requirements.
- A driver can sign into any vehicle fitted with a Driver Mate display in the fleet at the start of their shift and their current work and rest history will be downloaded from our central servers.
- Our system automatically dispatches reports detailing the amount of work and rest time that each driver has taken, in addition to any breaches that they may have, drastically reducing the amount of paperwork and administration required by the back office. Automated email and SMS alerts can also be sent to fleet managers so that they can be immediately aware of any breaches by non-conforming drivers.
- Driver Mate has been designed from the ground up for the specific requirements of the heavy vehicle transport industry. Our system has been extensively tested and built to ensure that HVNL compliance for both drivers and fleet managers is an easy and trouble-free process.





FleetLogix

Intelligent Solutions

www.fleetlogix.com.au

CONTACT US

Ph : 1300 729 333

Email : sales@fleetlogix.com.au

Website : www.fleetlogix.com.au

Fleetlogix is a globally renowned company that offers specific solutions for clients and various industries in order to keep vehicles, trucks and fleet operations always visible.

Fleetlogix constantly strive for innovation both in Vehicle Tracking and Fleet Management, and hold the right to claim to be a provider of Intelligent Solutions.